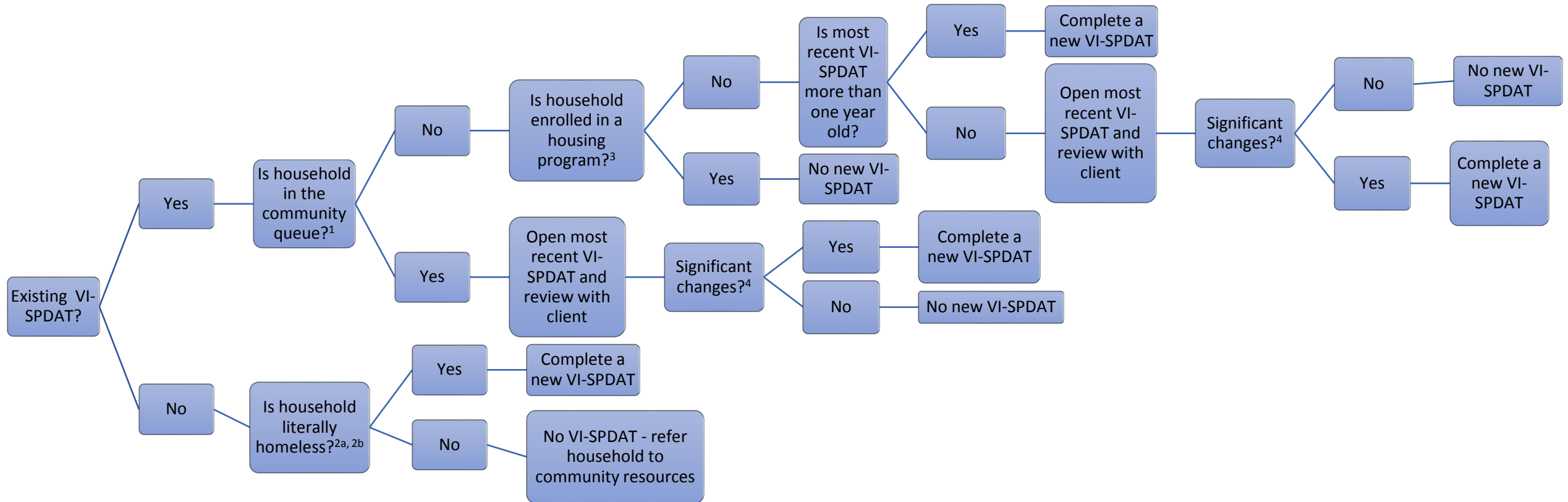


When should I do a VI-SPDAT?



¹ Check to see if the client is already in the queue by looking for a note under the client’s profile photo in HMIS. If the client is already in the queue, you’ll see a message there that reads “Client has an active entry on the Community Queue.”

^{2a} Some programs at Bill Wilson Center conduct the VI-SPDAT for transitional-age youth who are not literally homeless. This question doesn’t apply in these cases.

^{2b} Literally homeless as defined by HUD. See https://files.hudexchange.info/resources/documents/HomelessDefinition_RecordkeepingRequirementsandCriteria.pdf.

³ In the client’s HMIS record, click on the “PROGRAMS” tab. Look for all programs with an end date that reads “Active.” Look for the name of each active program in the list of programs on page 2 of this document. If you find any of the active programs on this list, move to “Yes.” in the diagram. If the program is not on the list on page 2, move to “No.”

⁴ Significant change has occurred when the client experiences a life event or change in circumstances that substantially impacts the household’s vulnerability.

Note that this process does not apply for programs that handle direct referrals.

If you are still unsure how to proceed with a client, please contact your OSH program manager for guidance. If you are unable to connect with a manager at OSH, use your best judgment and alert the program manager as soon as you are able.

Active Housing Programs as of 7/13/2019		
[CCP Housing Maintenance] CHDR 2013	[CCP Housing Maintenance] SCC MHD Onizuka Crossing	LifeMoves-SH-Hester Project [TRANSFERRING]
[CCP Housing Maintenance] CHDR 2016	[CCP Housing Maintenance] SCC MHD Parkside Studios	Maria Way
[CCP Housing Maintenance] Continuum of Care Program 5022	[CCP Housing Maintenance] SCC Rental Assistance Program	MHD Community Reintegration RRH - North County (RRH)
[CCP Housing Maintenance] Continuum of Care Program 5320	[CCP Housing Maintenance] SCVHHS ML RAP 2	Opportunity Center PBV
[CCP Housing Maintenance] Eagle Park PBV	[CCP Housing Maintenance] SCVHHS Supporting Housing Program PSH	Our New Place
[CCP Housing Maintenance] Edwina Benner PBV	[CCP Housing Maintenance] Second Street PBV	Paseo Senter I (1898 Senter Rd) - McKinney
[CCP Housing Maintenance] Gilroy Sobrato Family PBV	[CCP Housing Maintenance] SS RAP - CoC & CCP	Peacock Commons HUD
[CCP Housing Maintenance] H1K CCP Bella Terra	[CCP Housing Maintenance] The Veranda PBV	Peacock Commons LI
[CCP Housing Maintenance] HUD Bonus 2014	[CCP Housing Maintenance] Tully Gardens	Peacock Commons MHSA
[CCP Housing Maintenance] HUD CCP Placement Project	[CCTP Housing Maintenance] CCTP	Rapid Rehousing & Supportive Services (ESG City SJ)
[CCP Housing Maintenance] HUD Family Housing	[RRH CSJ] Bill Wilson Center	Rapid Re-Housing Families - OSH
[CCP Housing Maintenance] HUD Housing CM for the Homeless	[RRH CSJ] Consortium Clients	Rapid Re-housing for Families
[CCP Housing Maintenance] HUD Housing Placement for MRR	[RRH CSJ] Family Supportive Housing	Rapid Rehousing for Youth (HUD)
[CCP Housing Maintenance] HUD North County Inns	[RRH CSJ] PATH	Rapid-Rehousing for Homeless Youth (SCC OSH)
[CCP Housing Maintenance] HUD Samaritan Inns	[RRH CSJ] The Health Trust	Reentry Rapid Rehousing Program
[CCP Housing Maintenance] HUD Sunset Square	Abode OSC Non-Funded	RRC RRH Exception Program
[CCP Housing Maintenance] Laurel Grove PBV	Abode OSC-CWG HUD	RRH for Consortium Clients
[CCP Housing Maintenance] MHD Community Central Reintegration (Local PSH)	BFLC - PSH	RRH for Singles
[CCP Housing Maintenance] MHD Community Reintegration - North County (PSH)	Bringing Families Home	San Antonio Place
[CCP Housing Maintenance] MHD Custody Health High Users - PSH	CalWORKS HSP Rapid Re-Housing	SCC MHD - MHSA 4th Street Apartments
[CCP Housing Maintenance] MHSA 4th Street Apartments	CHDR 2010	SCC MHD - MHSA Archer Street Apartments
[CCP Housing Maintenance] MHSA Archer Studios	CHDR 2016	SCC MHD - MHSA Belovida Santa Clara
[CCP Housing Maintenance] MHSA Belovida Santa Clara	City of Santa Clara TBRA RRH	SCC MHD - MHSA Curtner Studios
[CCP Housing Maintenance] MHSA Fair Oak Plaza	Continuum of Care Program 5022	SCC MHD - MHSA Fair Oak Plaza
[CCP Housing Maintenance] MHSA Ford Road Plaza	Continuum of Care Program 5320	SCC MHD - MHSA King's Crossing
[CCP Housing Maintenance] MHSA Kings Crossing-TAY	ESG RR	SCC MHD - MHSA Paseo Senter I & II (1896 & 1900 Senter Rd)
[CCP Housing Maintenance] MHSA Onizuka Crossing	Gilroy Place	SFLC - Veteran Rapid Rehousing Program (VRRP) - OSH - SCC
[CCP Housing Maintenance] MHSA Parkside Studios	Glenview Way Home	SFLC I - Permanent Housing VLI - SCC/CSJ
[CCP Housing Maintenance] MHSA Paseo Senter	Haven to Home Rapid Re-Housing	SFLC III - PSH - SCC - HUD
[CCP Housing Maintenance] MHSA Peacock	HomeFirst - Re-Entry Minimal to RRH	SH - RRH Single Adults - OSH - SCC
[CCP Housing Maintenance] Mission Rebuild	HomeFirst - Re-Entry RRH	Sobrato Transitional Perm Housing (HACSC)
[CCP Housing Maintenance] Non-CCP Housed	HomeFirst - Re-Entry RRH Exceptions	SSVF Priority 1 RRH
[CCP Housing Maintenance] Opportunity Center PBV CHDR	HomeFirst - SSVF RRH	SSVF Priority 2 RRH
[CCP Housing Maintenance] Orchard Ranch Scattered Site	Housing and Disability Advocacy Program (HDAP)	SSVF Veterans - Rapid Re-Housing
[CCP Housing Maintenance] PBV CDN	King's Crossing	Sunset Square (Not Part of Care Coordination Project)
[CCP Housing Maintenance] PWH Scattered Site	LifeMoves-Safe Haven-Home Safe San Jose	VRC SSVF Rapid Rehousing
[CCP Housing Maintenance] SCC Chronically Homeless PSH	LifeMoves-Safe Haven-Home Safe Santa Clara	
[CCP Housing Maintenance] SCC MHD Donner Lofts	LifeMoves-SH-Alexander House	